



Strategic Estate Planning Illustration

Comprehensive Flowcharts Illustrating
ESTATE DISTRIBUTION PLANNING

AN ANALYSIS PREPARED EXCLUSIVELY FOR

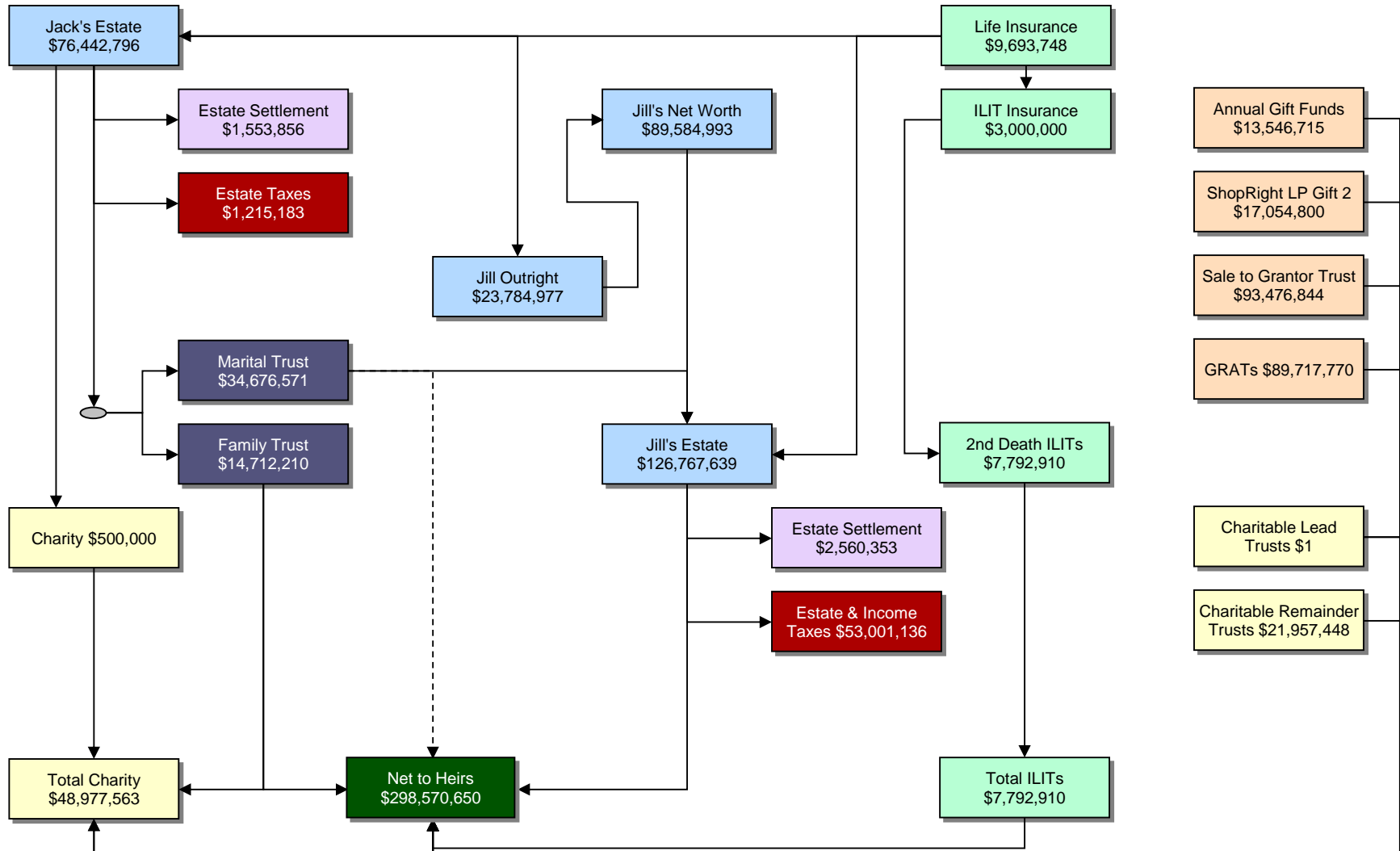
Jack & Jill Flash

Recommended Allocations & Advanced Planning

Estate Flow Illustration

Jack & Jill Flash

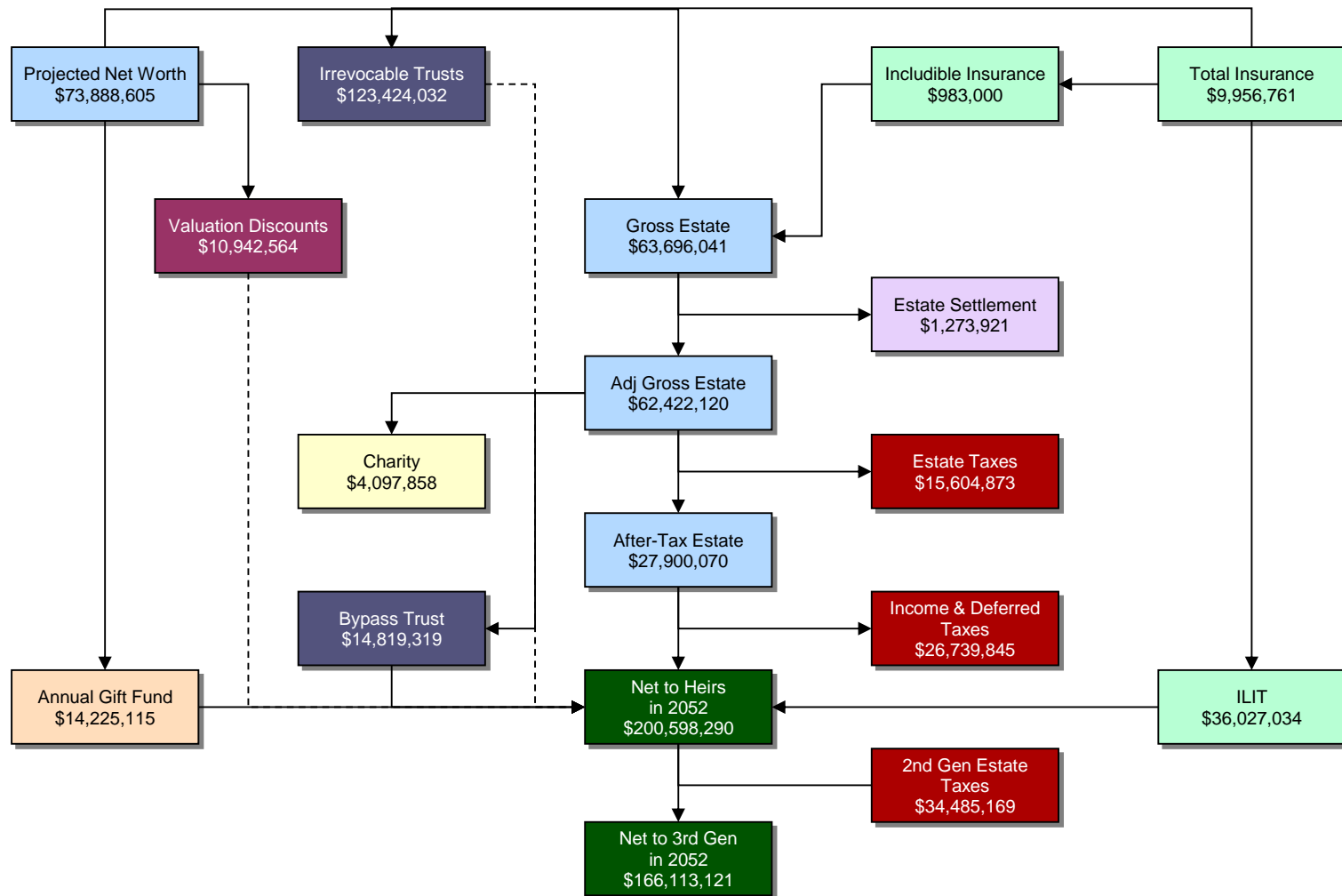
Jack Dies in 2055 & Jill Dies in 2056



Estate Flow Illustration in 2052

Jack & Jill Flash

Illustration Assumes That Death Occurs in 2052



Estate Flow Illustration with Generation-Skipping Transfer Planning - Residual Plan

Jack & Jill Flash

Jack Dies in 2018 and Jill Dies in 2018

